

WATER FULL VALUE

REWAISE reveals the full Value of Water for Europe, considering three key technical, economic and societal factors:

value in water, by extracting minerals from seawater brine, recovering nutrients from wastewater, and converting all organic matter and biomass into energy

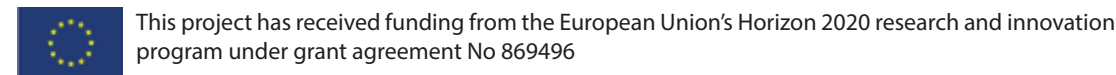
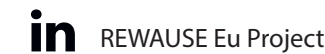
value through water, generating wellbeing in society through stakeholder participation and new governance methods to maximize the positive effects of innovation for the users and the environment.

value from water, developing the business of sustainable services and innovative products all along the water cycle, working with start-ups and SMEs to give them privileged access to the large utility users



CONSORTIUM

REWAISE comprises 25 entities from 11 European countries: Belgium, Croatia, Czech Republic, Denmark, France, Italy, Ireland, Poland, Spain, Sweden and the United Kingdom. These entities are experts in the different areas involved in the project: water, energy, local governance, venture capitals and business experts, research and also ancillary services.



A new smart water ecosystem

A network of living labs across Europe to test technological innovations in real water environments.

25 partners **11** European countries

SYNERGIES

REWAISE also joined forces with the other European funded projects under the Horizon 2020 Programme (CE-SC5-04-2019) to generate synergies and work together for a better water-smart economy and society in Europe. Together, they have created the **CIRSEAU Cluster**.

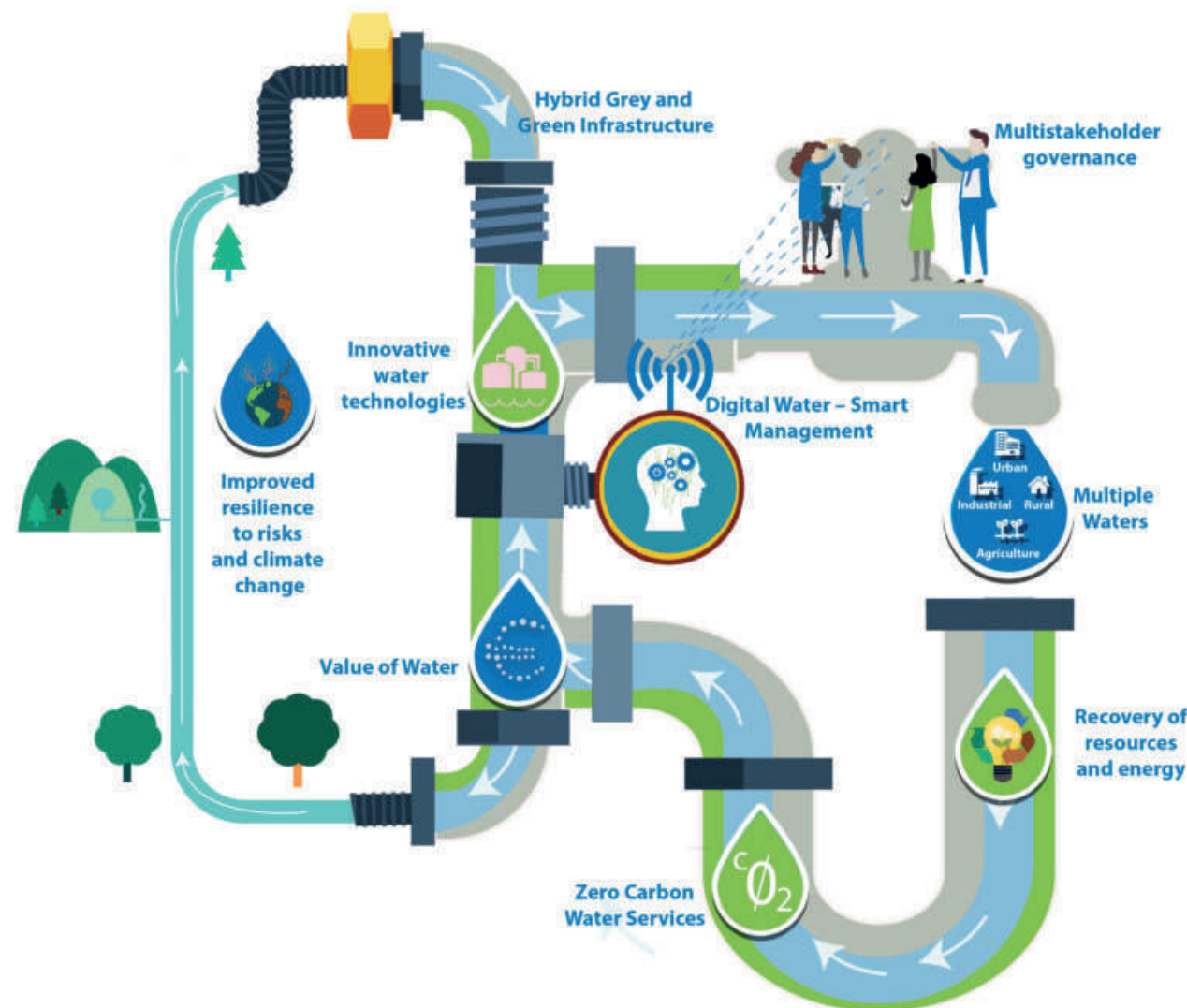


CIRSEAU- CIRcular Smart Economy + EAU (for water)



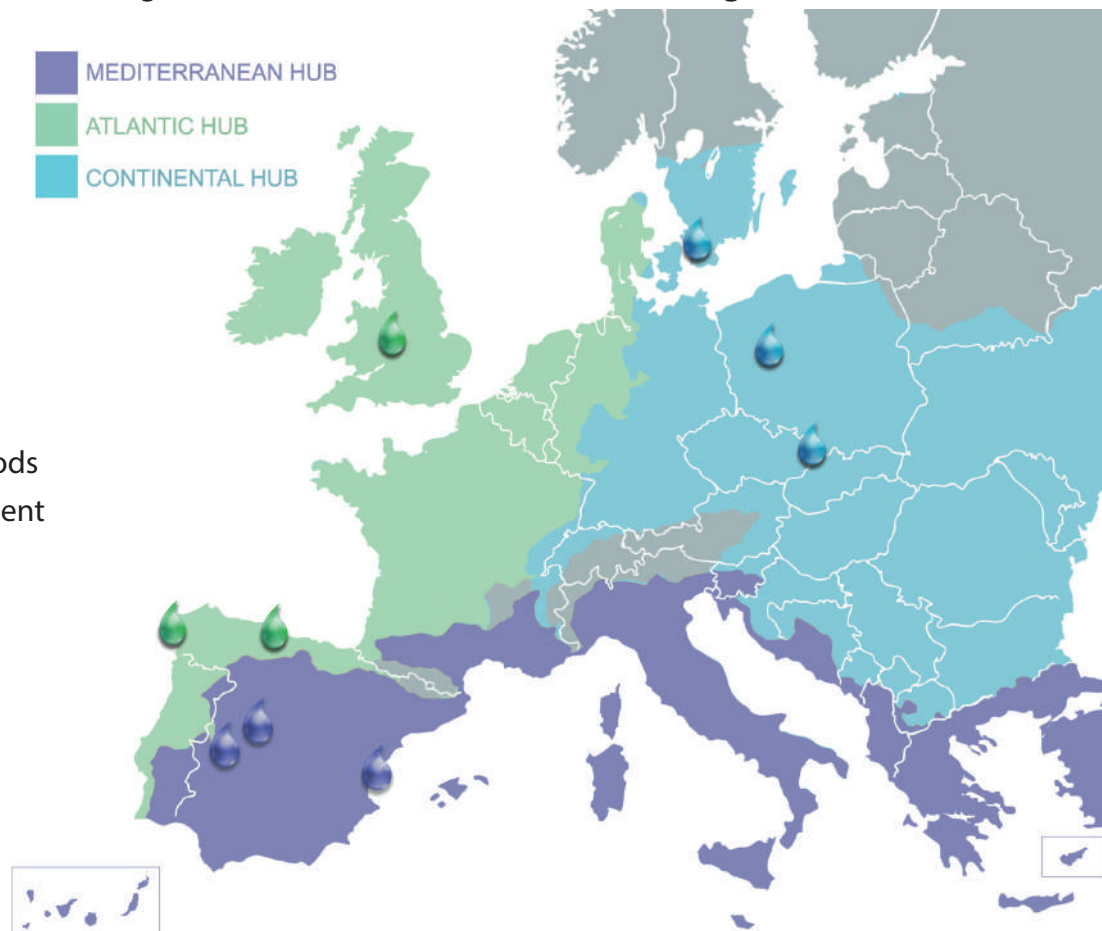
RESILIENT WATER INNOVATION FOR A SMART ECONOMY

REWAISE aims to create a new **“smart water ecosystem”**, integrating an intelligent digital framework for decentralised water services and decision-making, involving all relevant stakeholders to embrace the true value of water, reducing freshwater and energy use, and recovering nutrients and materials. The results will be a carbon-free, **sustainable hydrological cycle** in line with the concept of a **resilient circular economy**.



LIVING LABS

REWAISE will recover energy, nutrients, and materials from water in real operational environments, implementing technological innovations and new water governance models with a **network of living labs in five countries**.



CONTRIBUTIONS

- Social engagement
- Redefine governance methods
- Alternative water management
- New business models

WINcubator

To trigger new entrepreneurs, REWAISE launches the business accelerator WINcubator, that connects large utility users with creative product suppliers. Based on the Swedish Water Innovation Network-WIN model, it will support a market arena using open innovation.